

HGP Open Part Number	Schematic Drawing #	Approx Weight (LBS)
HGP0150CW0S0000	29474	260
HGP0150CW0C0000	29474-1	267
HGP0150CW0S1000	29474-PQ1	262
HGP0150CW0C1000	29474-PQ	269

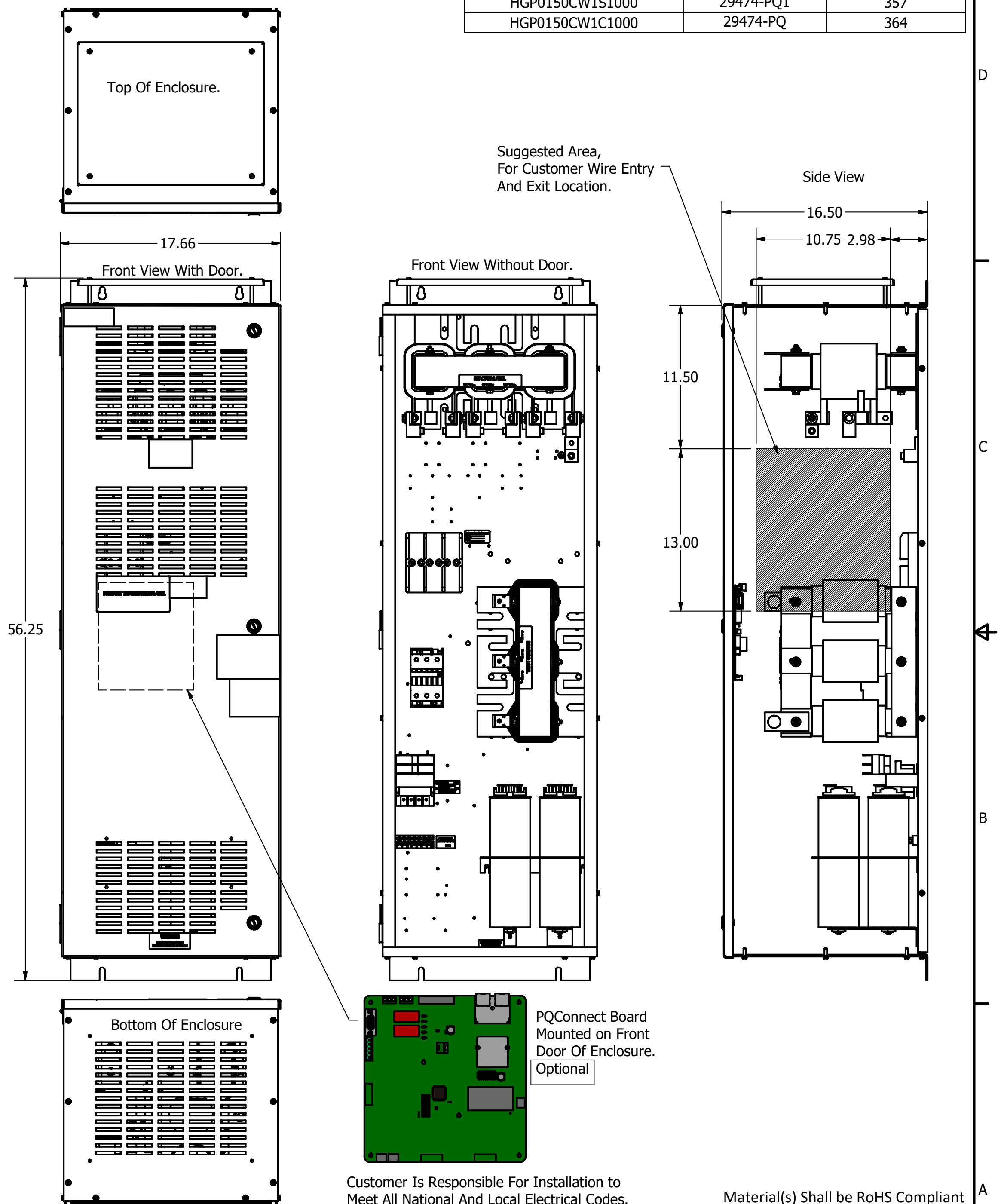
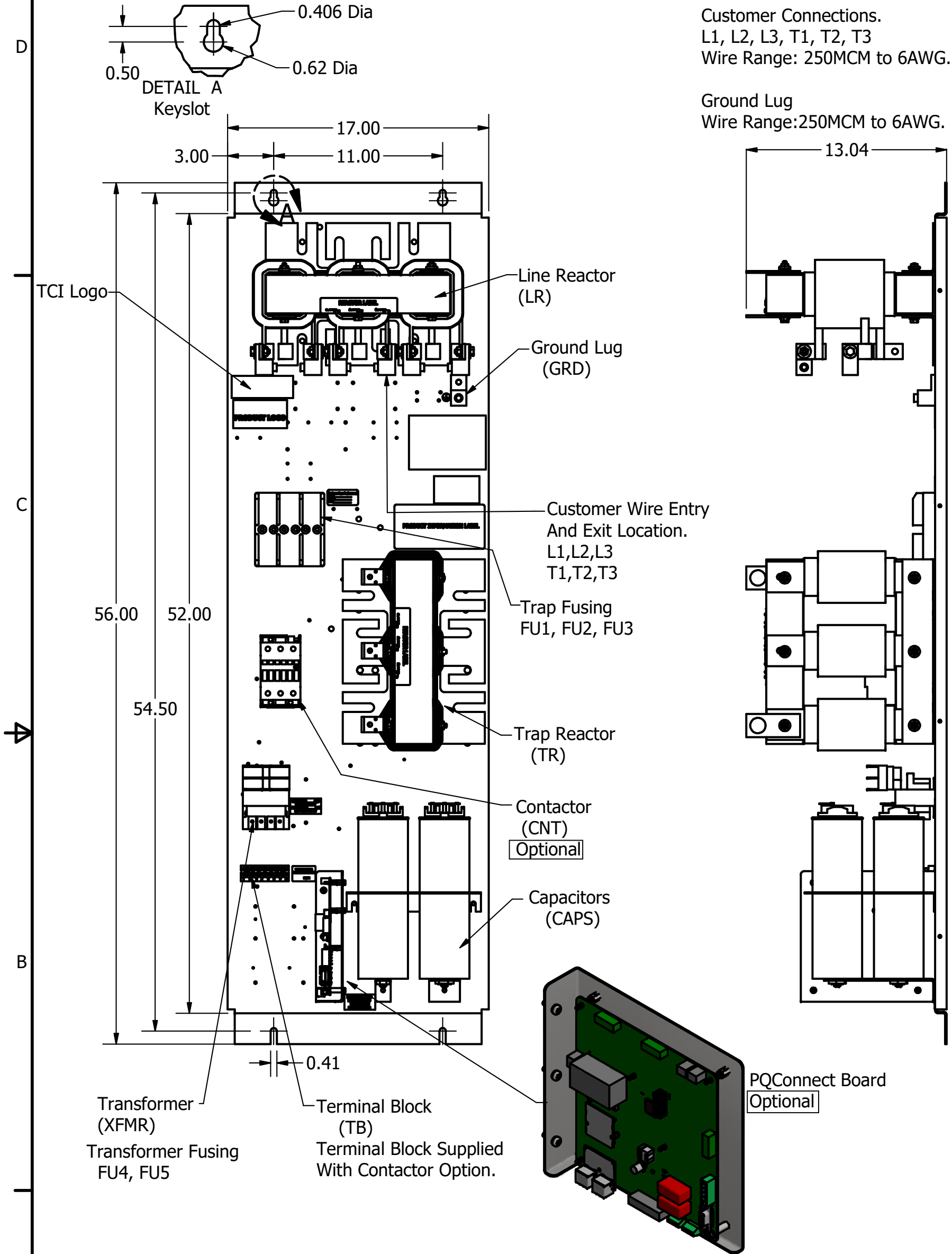
HGP Part Number	HorsePower (HP)	kVar	Harmonic	Voltage (V)	Hz.	Phase
HGP0150CW----	150	45	5th	600	60	3

HGP Eclosed Type 1 Part Number	Schematic Drawing #	Approx Weight (LBS)
HGP0150CW1S0000	29474	355
HGP0150CW1C0000	29474-1	362
HGP0150CW1S1000	29474-PQ1	357
HGP0150CW1C1000	29474-PQ	364

Note: For Torque Information See IOM Manual.

Customer Connections.
L1, L2, L3, T1, T2, T3
Wire Range: 250MCM to 6AWG.

Ground Lug
Wire Range: 250MCM to 6AWG.



Note: Customer is responsible for proper cooling of filter components on open panels.
Capacitors Maximum Ambient 50°C

Components	HGP0150CW----			
	0S0000/1S0000	0C0000/1C0000	0S1000/1S1000	0C1000/1C1000
Line Reactor (LR)	X	X	X	X
Trap Reactor (TR)	X	X	X	X
Capacitor (Cap)	X	X	X	X
Trap Fusing, FU1, FU2, FU3	X	X	X	X
Contactor (CNT)		X		X
Transformer (XFMR)	X	X	X	X
XFMR Fusing, FU4, FU5	X	X	X	X
PQConnect Board			X	X

TCI, LLC CLAIMS PROPRIETARY RIGHTS IN THE MATERIAL HEREIN DISCLOSED. IT IS SUPPLIED WITHOUT PREJUDICE TO ANY PATENT RIGHTS OF TCI AND MAY NOT BE REPRODUCED OR USED TO MANUFACTURE ANYTHING SHOWN THEREIN WITHOUT WRITTEN PERMISSION FROM TCI.

NO	REVISION	DATE	BY
B	Add PQ Connect	8/24/18	DSW

TOLERANCES (EXCEPT AS NOTED)
DECIMAL
.XX ± .25
.XXX ± .10
FRACTIONAL
± 1/16
ANGULAR
± 1°

TCI W132 N10611 Grant Drive
Germantown, WI 53022

Material(s) Shall be RoHS Compliant

HarmonicGuard Passive
HGP, 150HP, 600/3/60, Open and Type 1

DRN BY: DSW DATE: 2/3/15
SCALE: 1/6 APRVD: 105708DG
SIZE: C SHT. 1 OF 1

Customer Is Responsible For Installation to Meet All National And Local Electrical Codes.